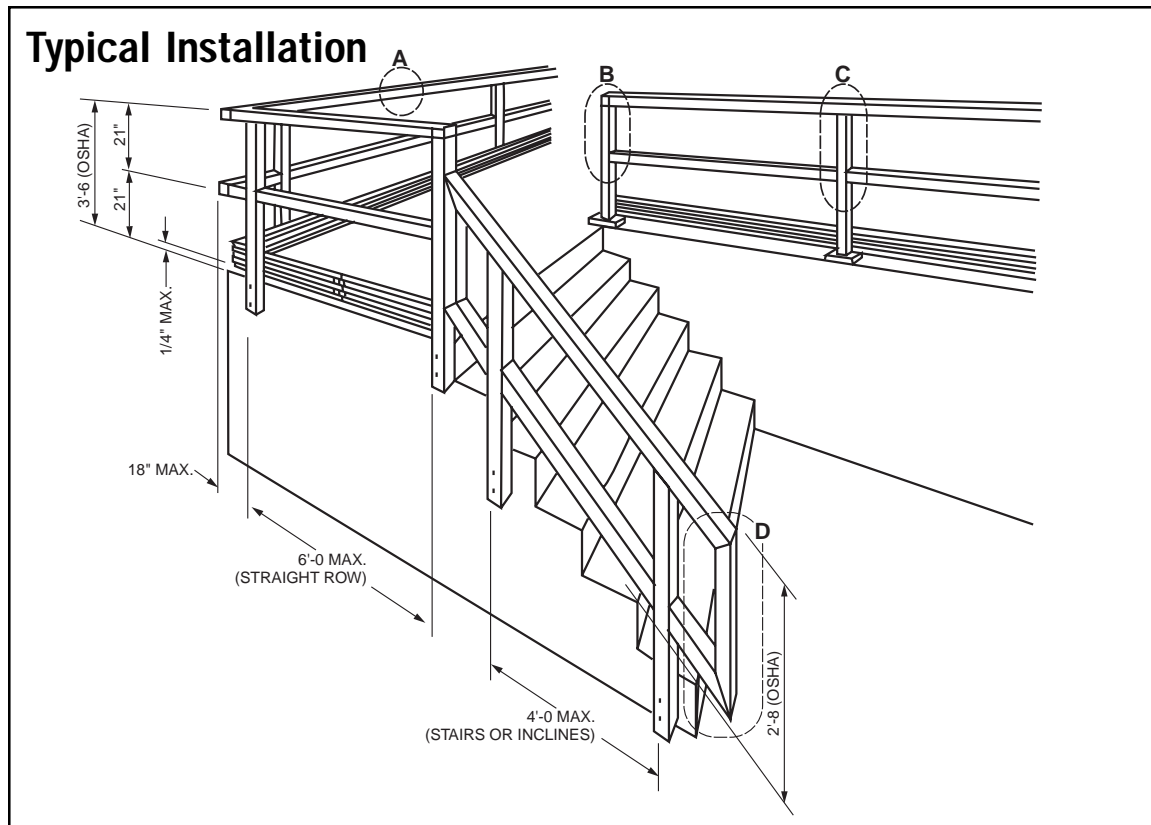
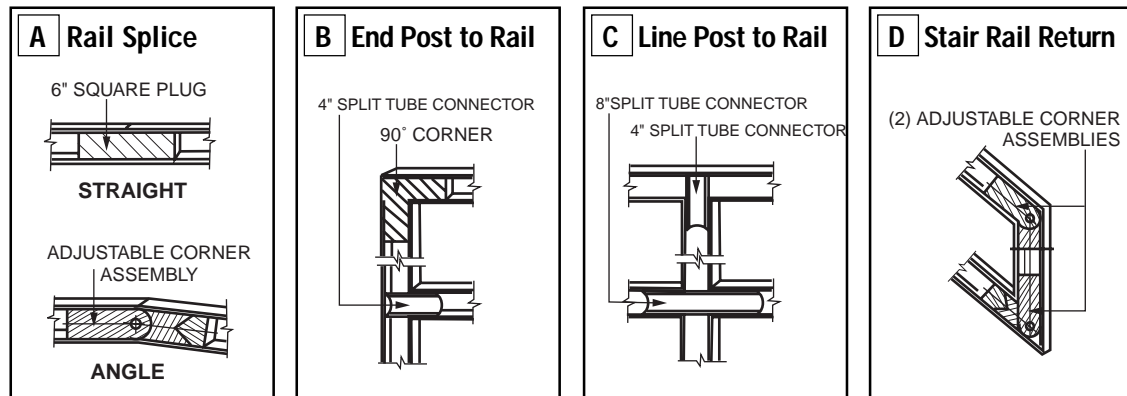


SAF RAIL™

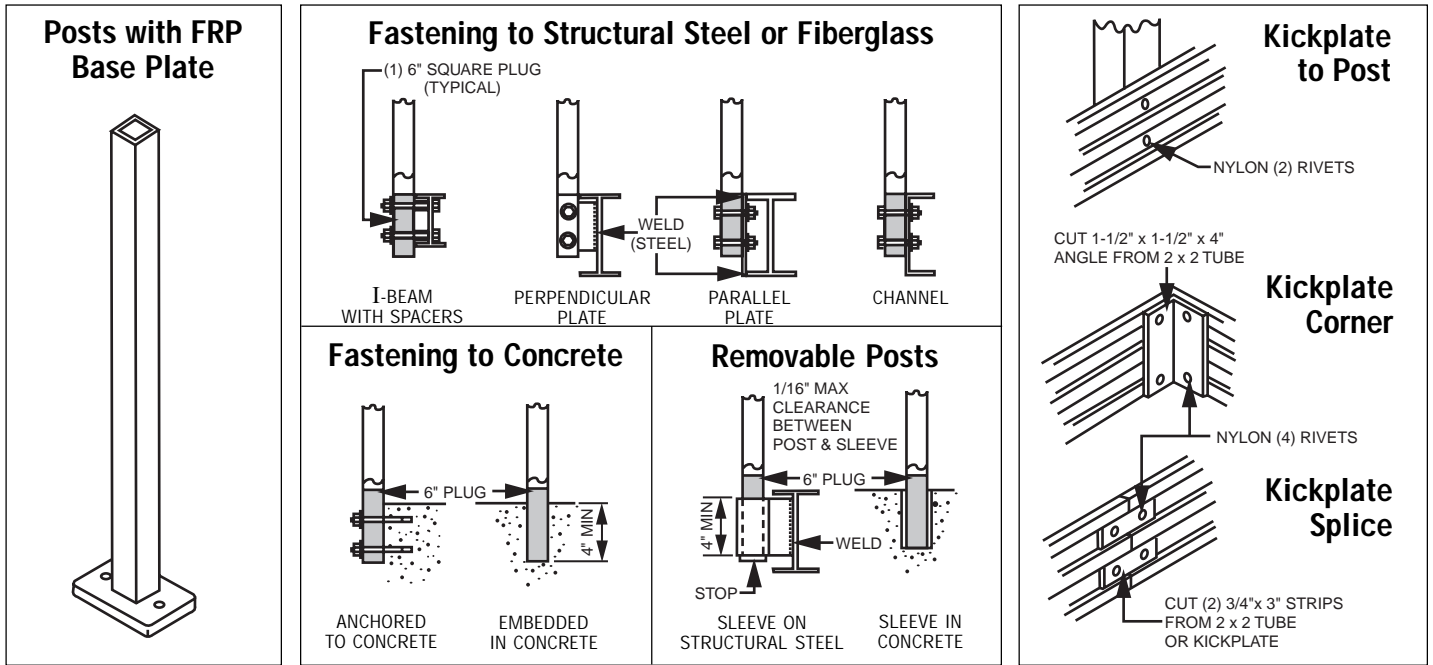
FIELD FABRICATION GUIDE



Connection Details All components secured with epoxy.

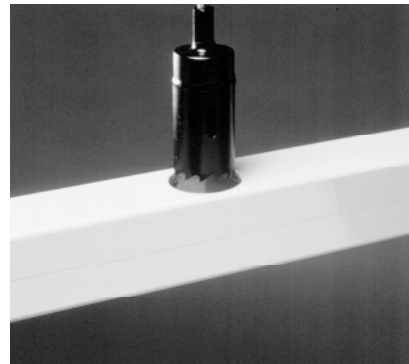
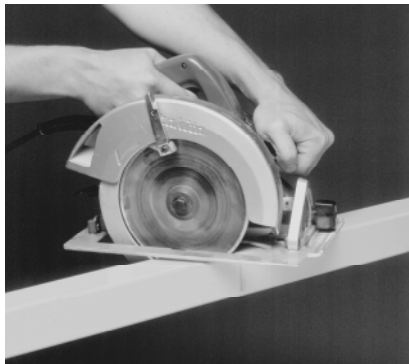


Suggested Post and Kick Plate Installation



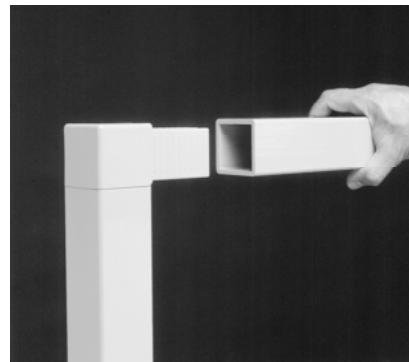
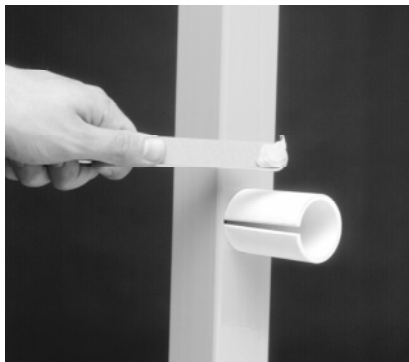
Fabrication Methods

1. Cut components to length and miter where necessary.



2. Locate and drill holes for split tube connector. Must use 1.68" dia. core drill (available from the Chatfield Division).

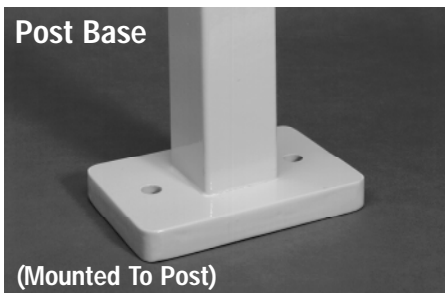
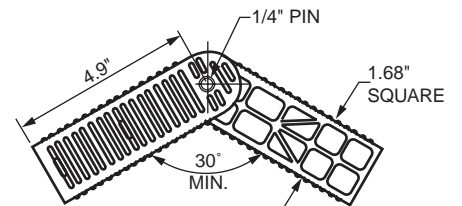
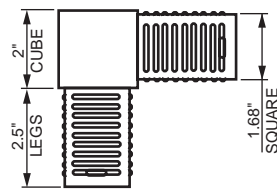
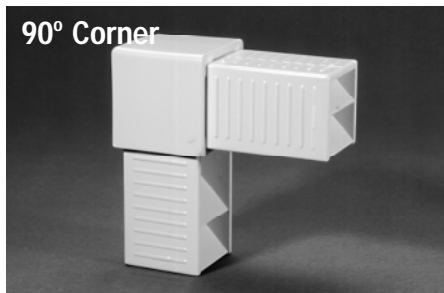
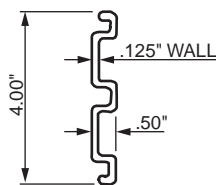
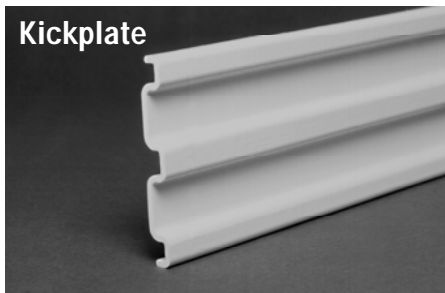
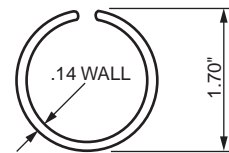
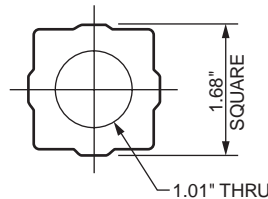
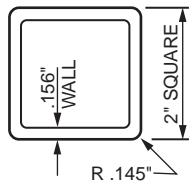
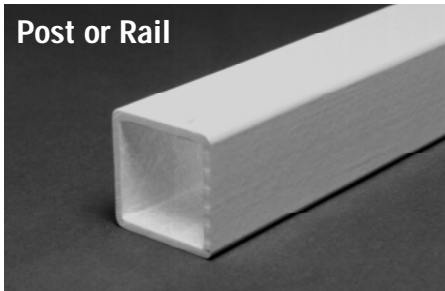
3. Apply recommended epoxy adhesive to connectors and inside tube (available from the Chatfield Division).



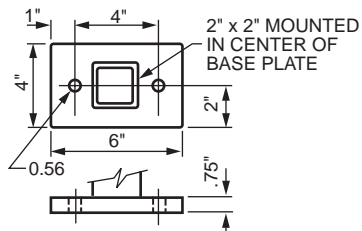
4. Press together. Wipe off excess adhesive. 1/8" tension pins recommended at connections for field fabrication.

NOTE: Joints must be immobilized until cured. The recommended temperature for epoxy cure is 60°F or above. Failure to use these installation and fabrication methods, including recommended epoxy adhesive and 1.68" dia. core drill, may cause failure.

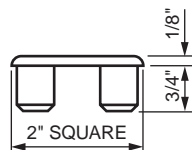
Basic SAFRAIL™ Components



(Mounted To Post)



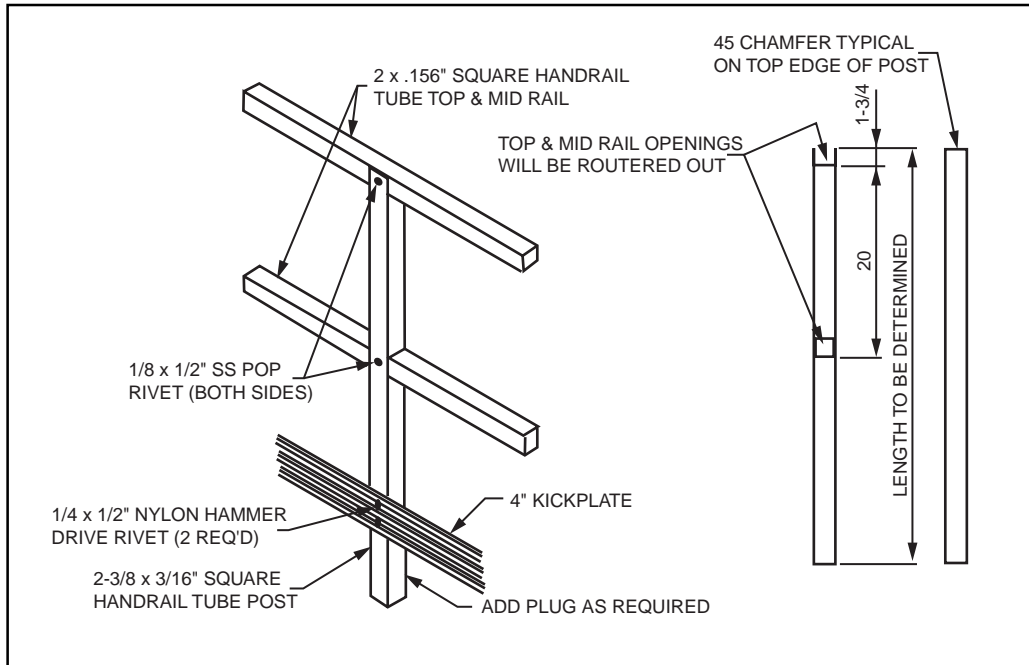
Note: For Capping Tubes (Special Construction)



Supplementary Components

- Nylon Rivets
- 1/8" x 1-1/2" Tension Pins
- Two Part Epoxy Kits
- Mounting Bolts
- Kickplate Splice and Corner Connectors

Alternative Post Design



List of Components & Accessory Items

- 2" x 2" x .156" Handrail Tube
Yellow or Gray, Vinyl Ester Fire Retardant, UV Coated @ 240"
- 2-3/8" x 2-3/8" x 3/16" Handrail Tube
Yellow, Vinyl Ester Fire Retardant, UV Coated @ 240"
- Kickplate
Yellow, Vinyl Ester Fire Retardant, UV Coated @ 240"
- FRP Base Plate with Post — Total Height 40"
- 2-3/8" x 3/16" Square Post
- 2-3/8" x 2-3/8" x 3/16" Alternate Handrail Post,
routed out, not bottom plugs
- Black End Caps
- Adjustable Corner Assembly (Total Assembly)
- 90° Corner Plug
- Kickplate Splice
- Kickplate 90° Splice
- Split Tube 8" Length
- Split Tube 4" Length
- 6" Square Plug
- Nylon Rivets
- 1/8" x 1-1/2" Tension Pins
- Epoxy Kits — 1 Pint Yellow
- Core Drill (1.68" Dia.)
- 1/8" x 1/2" SS Pop Rivets

TOOLS

- Electric Drill
- Hammer
- Core Drill & 1/8" Drill Bits
- Circular Saw
- Sandpaper
- Circular Saw Blades

NOTE: Tungsten carbide-tipped core drill bit & 7" grit-edged tungsten carbide circular saw blades are recommended (available from Chatfield Division).



STRONGWELL

ISO-9001 Certified Manufacturing Plant

BRISTOL DIVISION

400 Commonwealth Ave., P. O. Box 580, Bristol, VA 24203-0580 USA
(540) 645-8000 Fax (540) 645-8132

CHATFIELD DIVISION

1610 Highway 52 South, Chatfield, MN 55923-9799 USA
(507) 867-3479 Fax (507) 867-4031

www.strongwell.com